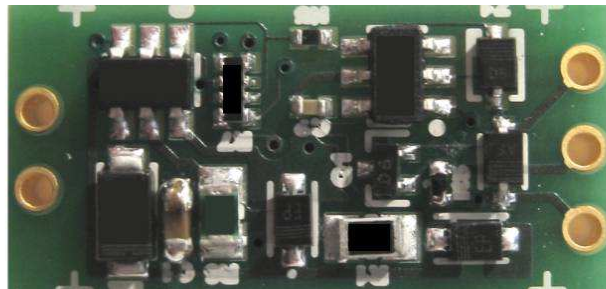

Elactis SA
Switzerland

Phone : +41 22 364 65 85
Fax : +41 22 364 65 87
E-mail : info@elactis.com
Web : <http://www.elactis.com>

Elactis
Electronics for Actuators and Integrated Systems

SOLENOID VALVE DRIVER¹

ADRV1026IMPAC



¹ In order to continuously improve the product values and functions may change without notice.
© 2011 Elactis SA. All rights reserved.

Features

- Wide input voltage range
- Increased solenoid performances
- Power saving
- Limited heating
- Full protection against coil discharge and reverse voltage

Description

The ADRV1026IMPAC is a small interface electronic board to be integrated into a valve or in a cable. It reduces the power consumption. The board is miniaturized to make it easy to integrate into very limited volumes. Upon the turn-on of the power the driver allows full current to the valve during a time called $t_{pull-in}$. Then it reduces the power by a ratio pre-programmed to customer specifications.

Ordering description

ADRV1026IMPAC33%

Parameters:

Pull-in time: Any values. Actual set value: **300 ms**
 Voltage reduction ratio: any value. Actual set values: **33 %**

Electrical Specifications

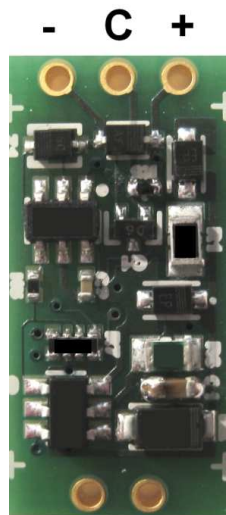
Parameter		Minimum	Maximum	unit
Power Supply		5	27	V
Pull-in current			2.0	A
Hold current			0.5	A
Pull in time	TT=300	285	315	ms
Voltage reduction ratio	YY = 25%	23	27	%
	YY = 33 %	30	36	
	YY=50 %	45	55	
ESD protection		23 (IEC 61000-4-2 level 4)		kV
Reverse voltage protection			- 30	V
Protection against coil discharge			diode	
Operating temperature range*		0	50	°C

*larger working temperature range is possible

Recommendation for use

The PCB board must be handled with care. During mounting electrical discharges may damage the board. Use adequate ESD protection.

Connections



(-) is the negative connection

(C) Leave it open

(+) is the positive 24 Volt DC connection

20 mm

(Valve) is the connection to the solenoid valve

Valve

10mm

History records

Rev.	Change	Date
1	Creation from ADRV1026	03.16.2012
2	Special version: 33% voltage reduction and 300 ms pull-in time	25.07.12